

RGNT No.1 User Manual



TABLE OF CONTENTS

	PAGE
1. Introduction.....	3
2. Safety Warnings.....	5
3. RGNT No.1 Description.....	7
4. Handlebar Controls.....	8
5. Anti Theft & Locking.....	9
6. First Steps to Operation.....	10
7. Tuning Suspension.....	10
8. HMI, Handlebar & Controls.....	11
9. Service Work on Brakes.....	13
10. Wheels & Tyres.....	14
11. Electrical System.....	15
12. Charging.....	15
13. Charger.....	16
14. Error Codes.....	17
15. Cleaning & Storing.....	17
16. List of Included Tools & Accessories.....	19
17. Mandatory Check-Ups.....	19
18. Service Records.....	20
19. Warranty.....	21

1. INTRODUCTION

Congratulations on your purchase of a RGNT No1. Now you are the owner of an exceptional electrical motorcycle, which will bring you much joy and wonderful experiences if you spend some time to read these instructions and learn how to look after your motorcycle.

These operating instructions correspond to the date of printing in the footer of each page and are the latest version of the series. It is not possible to exclude minor deviations that arise from further design developments.

All data contained herein are non-binding. RGNT Electric AB reserves the right in particular to change technical specifications, prices, colors, types, materials, services and SaaS, design, equipment and other. This without notice and without giving any reason is free to remove, replace the local conditions as well as stop the production of a particular model without prior notice. It does not guarantee delivery, differences in illustrations and descriptions, or misprints and mistakes.

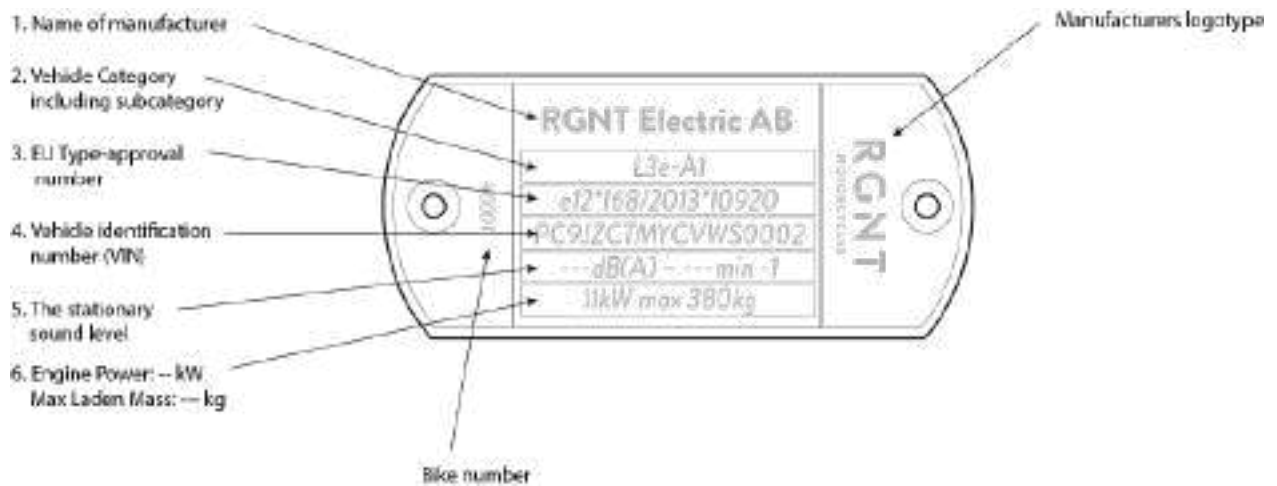
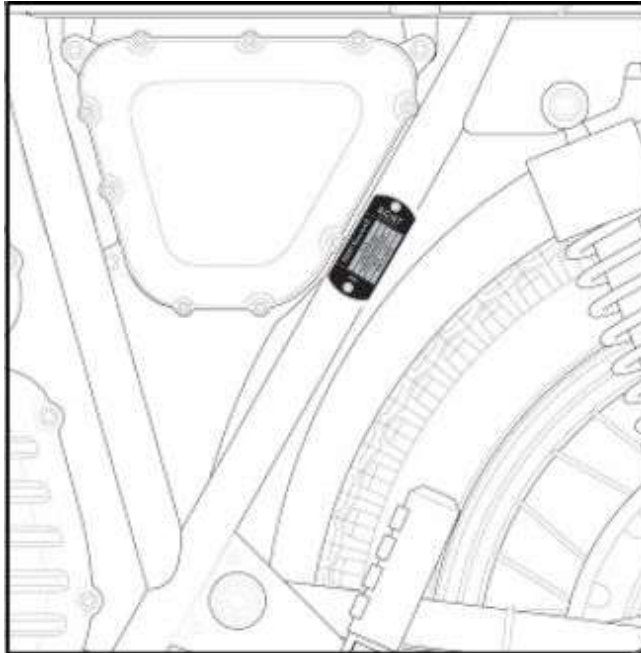
If you encounter a technical problem with your RGNT, contact the RGNT After-Sales Centre immediately to provide service or, if appropriate, guide you to solving the problem. The Centre can be contacted daily during standard working hours by calling +46 (0) 702 161 810 or by e-mail to warranty@rgnt-motorcycles.com.

Prepare the Vehicle Identification Number (VIN) located on the frame's steering neck with the format -YSH0100A0LKR00000- of your RGNT before calling.

1.1. Identification Numbers

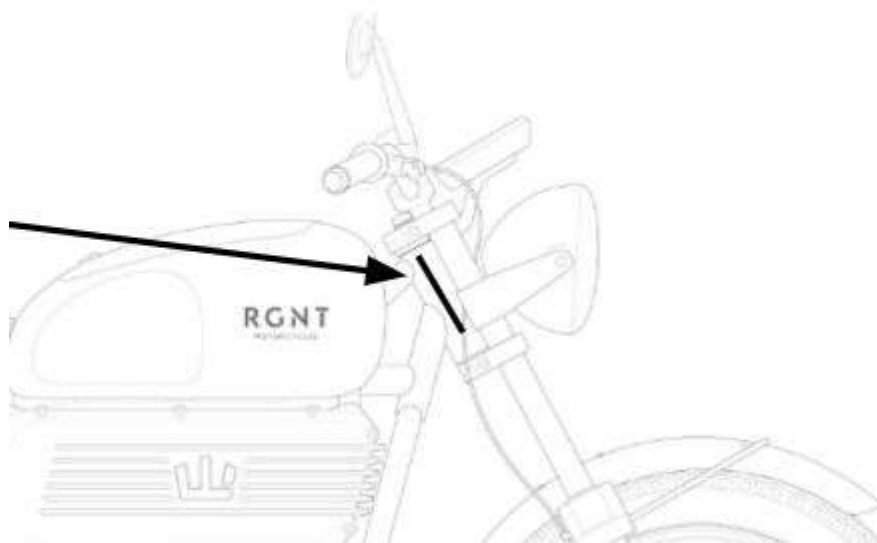
1.1.1. Statutory Plate

The Statutory plate is mounted to the frame tube on the left hand side of your vehicle, with 2 rivets.



1.1.2. VIN Number

The **Vehicle Identification Number** (“VIN”) is located on the right side of the steering stem.



2. SAFETY WARNINGS

2.1. Usage

Definition of use RGNT motorcycles are designed and homologated to the highest standards for road traffic. The motorcycle is not designed for field use or racing. It is an electric motorcycle, as such please pay attention to the warning labels when touching or disconnecting elements. They are seen for example on the battery charger, battery box and other high voltage areas.

2.2. Safety

Safety instructions for the safe handling of the RGNT No1, observe several safety instructions in the operating instructions (see chapter §6). Carefully read this manual.

2.3. Changes in RGNT No1 design

- It is forbidden to remove any equipment or parts of the RGNT No1.
- Any manipulation of the wiring of the RGNT No1 outside an authorized service center is prohibited.
- It is forbidden to use the RGNT No1 in an unattended condition.
- It is forbidden to replace parts of the RGNT No1 with parts not approved by the manufacturer.

2.4. Secure operation

- Do not operate RGNT No1 under the influence of alcohol, drugs or medication.

- Do not operate RGNT No1 when you are not physically fit and able.
- Be highly visible at all times.
- Follow the road rules.
- The RGNT No1 is designed to carry you and one passenger. When you carry a load or passenger it can affect the stability and handling. Always ride at reduced speeds and observe the limits when carrying loads.

2.5. Protective clothing

- Wear protective clothing, such as a helmet, gloves, suitable boots, trousers and protectors with each ride.
- Use protective clothing that is in perfect condition and complies with legal regulations. For the sake of your safety, it is recommended that you use the RGNT No1 only whilst wearing suitable protective clothing.

2.6. Limitations & rules whilst working your RGNT no.1

Service and maintenance on your No1 require special tools that are not included in the vehicle. If you do not have these tools, contact an authorized service center. Components that cannot be reused after disassembly must always be replaced by new ones. Some screws require gluing. Follow the manufacturer's instructions when working with them. Components that will be reused after dismantling should be carefully checked and cleaned. After the service, you need to make sure the RGNT No1 is in perfect condition.

2.7. Operating Instructions

Read the operating instructions (see chapter §6) before your first ride. It will help you find out how to operate the RGNT No1 correctly and make it easy for you to get to know its special features. It also contains many tips for adjusting your RGNT No1 for an even better riding experience.

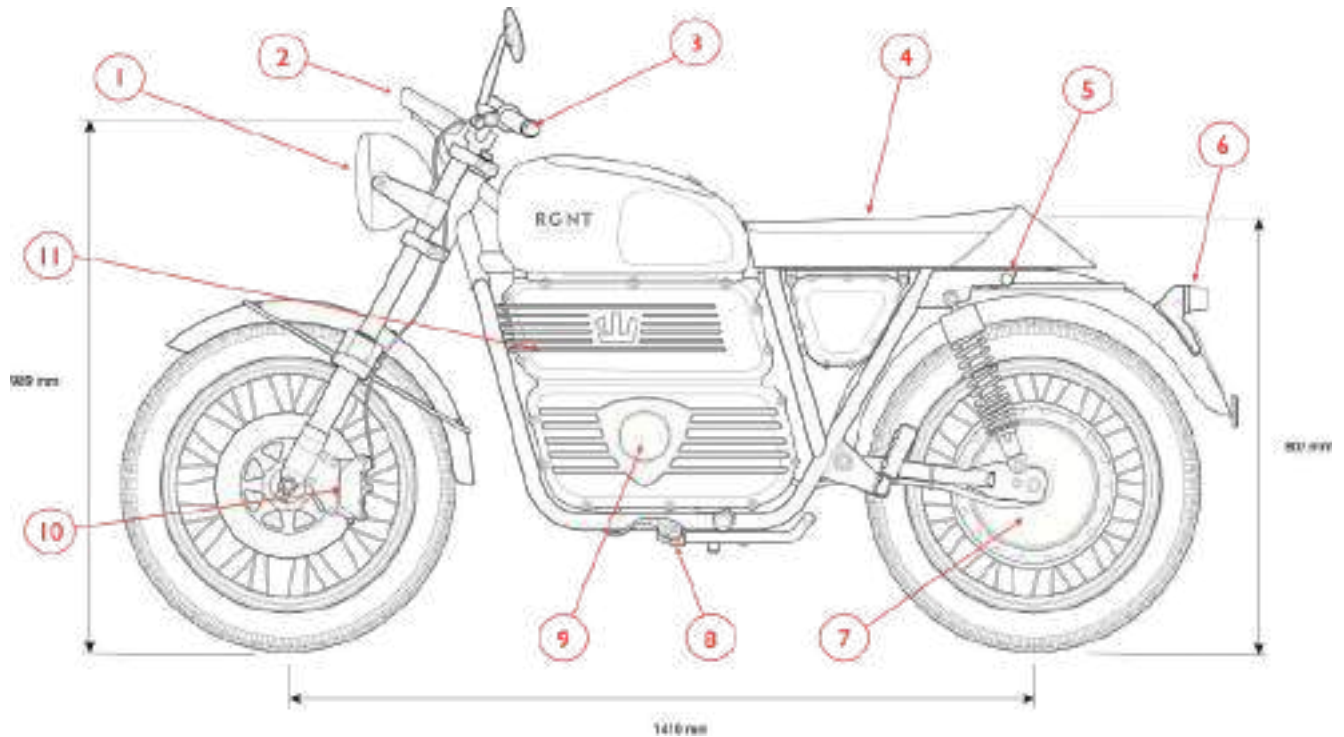
2.8. Warranty & guarantee

The standard warranty guarantee is covered by the attached terms and conditions. It will be voided by damage caused by actions contrary to these operating instructions.

2.9. Spare Parts

For your safety, only use OEM parts supplied by RGNT Electric AB. Damage arising from the use of third-party products is not a responsibility of RGNT. Removing or modifying your lights or other equipment can also make your RGNT illegal.

3. RGNT No.1 DESCRIPTION



1. Headlight
2. HMI/Display
3. Front Indicators
4. Seat
5. Rear Indicators
6. Tail Light
7. Electric Motor
8. Side Stand
9. Charge port (right side)
10. Front brake/CBS
11. Battery

4. HANDLEBAR CONTROLS



Brakes

- 1) Combined brake system
- 2) Front Brake

5. ANTI THEFT & LOCKING

5.1. Steering Lock

The steering lock is located on the right side of the steering column. To engage the lock, the front wheel must be turning to the left. Then insert the key, push the lock piston into the lock and twist it clockwise until it hatches. then gently slide out the key and then check that the steering lock works by turning to the right.

Warning! Be aware that the key is fragile and twisting of the steering while having the key in the lock can damage the mechanism and/or key.

5.2. NFC Tag - Immobilizer

The ignition is controlled thru the NFC keytags. To start the ignition please sweep the tag on the left side of the triangular box underneath the seat.,

Warning - If a tag is not working properly please contact RGNT or an authorized dealer to sort any issues.



Left control

- 1) Hazard
- 2) Main beam
- 3) Dipped beam
- 4) Position light
- 5) Horn
- 6) Turn signal L / R



Right control

- 1) Power Switch
- 2) Start button

6. FIRST STEPS TO OPERATION

RGNT No1 is a modern electric motorcycle and it's easy to put into operation.

It is possible to start your journey immediately without heating or further preparation after the Vehicle is switched on and put into drive mode.

Before riding, make sure that the available battery capacity is sufficient to reach your destination charging point.

6.1. How to start

Step 1 - Immobilizer

- Bump your NFC key against the right side of the triangular box. There is a beeping sound from the horn along with all indicators flashing once when it's turned on. After the beep and the lights and dashboard will come on.

Step 2 - Steering lock (If used)

- If the steering lock is enabled, insert the key in the lock and turn it 45 degrees counter clockwise to release the steering lock.

Step 3 - Controls

- Sit on the motorcycle, adjust the controls to suit you and feel comfortable. Set the mirrors so that you have a good view of what's happening around you. Test all brakes and check brake fluid level. Confirm all lights are functional. Confirm that the battery has sufficient power to get you to your destination.

Step 4 - Ride

- Switch the power button "on" (if applicable)
- Hold the left brake and push the ignition button for 2 seconds. This will put the vehicle into Drive. The "N" (neutral) logo will change into "D" (drive) in the dashboard.
- Release the brake to start riding

7. TUNING SUSPENSION

RGNT no1 has hydraulic shock absorbers with adjustable spring pre-tensioning. The settings can be adjusted at your RGNT Service partner. There are four (4) positions for adjustment, it is delivered on the softest position, which is appropriate for normal use for a driver of 85kg.

Please visit your local RGNT service partner to adjust the suspension.

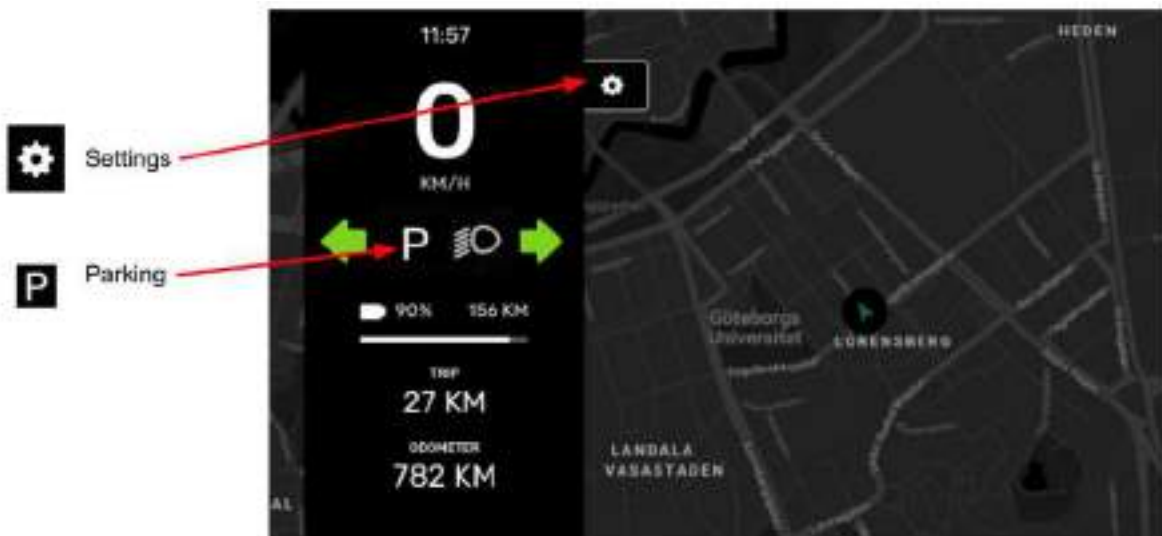
8. HMI, HANDLEBAR AND CONTROLS

8.1. Tell tails



8.2. Settings

OBS! The settings menu is only accessible when the vehicle is unlocked and in “Parked” or “Neutral”. When the vehicle is set to “Drive” the icon will disappear and the function will no longer be accessible.



Push - Exit
Settings

MPH / KMH
Switch

Push button -
Clear Trip Meter



8.3. GPS

The map & position is visible at the home screen, however its functionality is reduced until RGNT releases a new software update. The software will be checked at your service partner.

8.4. Turtle Mode - Power Reduction



There is a built in Power Reduction feature in the vehicle to prevent the powertrain from overheating and draining the battery to a state where you might not make it home. The Symbol of a Turtle with a lightning on the shell will occur on the screen until the reduction is heaved.

Warning. The turtle mode does not guarantee that you make it all the way home.

8.5. Software Reset

If the software in the HMI is malfunctioning or frozen, try to do a **“Hard-Reset”**;

1. Raise the side stand to driving position
2. Align the light switch into High-Beam
3. Turn the indicator switch into left
4. Activate the Warning/Hazard light
5. Hold the horn switch until the system resets (ca 2-3 seconds)

14.4 Software

The Dashboard/HMI system features “Over-the-Air” updates. The system will be updated whenever a new update is published from RGNT.. The Dashboard will inform when an update installs via a message.

To check the software version, IP, or GPS position. Enter the settings menu and push the green arrow in the lower right corner.



9. SERVICE WORK ON BRAKES

9.1. Brake Fluid

The Brake system is only compatible with DOT 4 Brake Fluid. RGNT recommends Shell DOT4 ESL.

9.2. Control of brake fluid level

The brake fluid reservoir tanks on the handlebar levers have translucent plastic windows. The windows allow you to check the state of the brake liquid visually without having to open the container. The brake fluid should reach 5 mm below the top of the reservoir tank.

9.3. Replacing brake fluid

Before opening the reservoir tank, cover the bodywork in the immediate area with a suitable material to prevent damage to the controls and paintwork from the corrosive fluid. Always use rubber gloves when working. - Carefully unscrew the reservoir cap - Pour in the brake fluid so that it reaches 5 mm below the top edge of the reservoir. Use only DOT 4 brake fluid - Carefully clean the container and screw in the cap.

WARNING - Brake Fluid could damage Chrome, Anodization and Paint on your vehicle.

9.4. Brake Discs

Control of brake discs. The front brake disc has a thickness of min 3 mm or max 4 mm, and the rear, min 2 or max 3 mm. With use they wear and their power decreases. When it reaches a thickness of -1 mm from new, it needs to be replaced. We recommend only using the discs supplied by RGNT.

10. WHEELS AND TYRES

10.1. Usage

Only use tyres recommended and approved by RGNT. Observe the dimensions recommended by the manufacturer. Other tyres may influence the control and safety of your vehicle during use. Tyre condition and pressure affect the behavior of the vehicle while driving.

10.2. Approved tyres

- Front, Avon Roadrider MK II 90/90-18"
- Rear, Avon Roadrider MK II 110/80-18"

10.3. Inspection

Visual control - Before riding, check both the front and rear tyre and make sure they are not cut, damaged or suffer any other mechanical damage. If damage occurs, replace the tyre immediately. - Check that tread depth is sufficient according to laws and regulations in the territory where the Vehicle is being used. If the depth is lower, replace the tyre - Check the age of the tyres. If they are older than 5 years, replace the tyres.

10.4. Control pressure in the tyre

If the tyre pressure is too low, it will cause abnormal tyre wear and dramatically reduce the balance/performance of the Vehicle which could result in injury or death. The right pressure will provide optimal driving performance and maximum tyre life according to our supplier AVON Tyres.

To control the pressure: - Remove the tyre's valve cap - Connect a pressure gauge - check before driving on cold tyres - When the pressure is not correct, inflate or deflate the tyres. - Replace the the valve cap

10.5. Tyre Air Pressure

- Front: 29 psi
- Rear: 34 psi

10.6. Maximum Load*:

- 330 kg (727 Lb)
- Total Weight of rider, passenger, cargo & Accessories

10.7. Replacement of tyres

- Rear tyre replacement involves high voltage cable handling. This work needs to be done by a dealer, preferably a RGNT authorized service provider.
- Front tyre replacement is done conventionally.

11. ELECTRICAL SYSTEM

11.1. Systems

RGNT no1 has two electrical systems:

- The 96V high-voltage system supplies the vehicle's motor and has its fuse on the controller. If this fuse is blown, contact an authorized service centre. Never attempt any repairs or other work on the high-power system without an authorized service provider.
- The 12V low-voltage system ensures the operation of all accessories on the Vehicle such as lights and Display functions. The voltage of this system is low enough not to be considered harmful in case of receiving a shock.

11.2. Warning

It's strictly forbidden to modify with the 96V system due to the High Voltage. Tampering or modifying the system could result in short circuits and shocks which can result in injury or death.

12. CHARGING

12.1. How to charge

- Open the charging connector cover on the right side of the battery and the cap will flip open. Remove the rubber dust cap from the charging port on the vehicle.
- Connect the charge cable to the connector
- Connect the electric plug to any household europort with a min 10A fuse. If the battery charge is below 100% the chargers light will be a solid red light.
- When the battery is charged fully (100%), the light on the charger will switch from red to a solid green.
- When the battery is charged to a desirable state, securely remove the charger from the household europort. After that remove the charge plug form the connector on the

vehicle by sliding the connector out. Do not wiggle or jank the connector, this could damage the port on the vehicle and/or your charger.

- Fit the dust cap on the charge port on the vehicle and snap the charge lid into place again.

13. CHARGER

13.1. Specification

The OEM charger for RGNT no.1 charges with 1200W and requires 110-220V to operate. When the charger is plugged in one of two lights will occur.

Red = Charging
Green = Fully Charged



13.2. Usage

Before connecting the charger make sure it is protected from rain or moist. The charger is not waterproof and can be damaged when in contact with water.

13.3. Cleaning

If you are in need to clean your charger, disconnect it before cleaning. Clean it with a damp washcloth to prevent water from entering the charger.

13.4. Warning

It's strictly forbidden to modify the 96V system due to the High Voltage. Tampering or modifying the system could result in short circuits and shocks which can result in injury or death.

The Charger is equipped with a fan to prevent overheating. Covering the charger and its fan may damage the hardware and could cause overheating, leading to fire.

Do not tamper with the connectors while the charger is connected to either the Vehicle or a Socket.

14. ERROR CODES

14.1. Check Engine

There is one tell-tale visible on the HMI that indicates that there is a malfunction in the powertrain (motor, battery, wiring etc). If the lamp is on, please contact RGNT or an authorized service partner to have a OBD reading.

The Error Code can be read and serviced with an OBD reader at any RGNT Service Partner.



15. CLEANING AND STORING

15.1. Washing

CAUTION: Do not use any harsh chemical products on plastic parts. Be sure to avoid using cloths or sponges which have been in contact with strong abrasive cleaning products, solvent or thinner, fuel (gasoline), rust removers or inhibitors, brake fluid, antifreeze, or electrolyte.

Note: We recommend the use of a garden hose to wash your motorcycle. High-pressure washers (like those at coin-operated car washes) can damage certain parts.

- Gently wash your motorcycle with a sponge or a clean soft cloth, mild detergent, and water. Do not pressure-, jet- or machine- wash your vehicle.
- Use care when cleaning the plastic parts (dash, fenders, and side panels), which can scratch easier than the other parts of your motorcycle.
- After washing, rinse your motorcycle thoroughly with plenty of clean water to remove any detergent residue.
- Dry your motorcycle with a chamois or a soft, dry towel.
- After cleaning, inspect for damage, wear or leaks. After washing the motorcycle, allow all of the electrical components to dry prior to operation. If the motorcycle is ridden after being washed, apply both brakes several times in order to remove any moisture from the brake pads.

15.2. Storing

Whenever you plan on not riding or storing your motorcycle for extended periods of time (more than 30 days), it is recommended that you charge the power pack to approximately 60% state of charge (SOC) and then leave the charger disconnected.

Do not store the bike with the charger connected, this might damage the battery and/or the BMS (Battery Management System). The power pack will discharge slowly over time. Check the SoC (State of Charge) at least monthly and charge it back up to 60% if it has dropped below 30%.

To prolong the life of your power pack you should store your motorcycle in a cool area. Storing your motorcycle in a hot area will cause your power pack's life to be shortened.

The recommended storage temperature is 5°C to 30°C. When you're ready to take your motorcycle out of storage to ride it again, charge for at least 24 hours to ensure optimal cell balance is restored.

Storage of the motorcycle for the winter in a non-heated garage is acceptable, as long as:

- The coldest temperature in the garage does not fall below 0°C
- The battery has a ~60% state of charge prior to storage and you check its state of charge at least monthly and charge it back up to 60% if it has dropped below 30%
- The power pack is initially topped off at a temperature above 32°F / 0°C. Storage temperatures below -4°F / -20°C may result in accelerated permanent decay of the power pack performance, and hence it is not allowed. Above this temperature and following the long term storage guidelines will ensure the power pack survives winter storage with no permanent damage, even if the temperatures dip well below freezing for weeks at a time.

16. LIST OF INCLUDED TOOLS AND ACCESSORIES

16.1. Keys

RGNT No.1 comes with;

- 2pcs, NFC ignition tags
- 2pcs, Steering lock keys
- 2pcs, Tank lid keys

16.2. Tools

Any special tools can be enquired from RGNT. Send an email to warranty@rgnt-motorcycles.com for more information.

17. MANDATORY CHECK-UPS

17.1. Notifications

The HMI/App will automatically notify when the scheduled service and checkups are due. Avoiding to service your vehicle 6 months or driving the vehicle longer than 250 km from receiving the notification will void the warranty.

18. MAINTENANCE AND SERVICE RECORDS

The full service records are accessible and downloadable thru RGNT's portal "Madeleine" as a PDF file. The report can only be reached and updated by an authorized service partner.

The required maintenance schedule specifies how often you should have your RGNT Motorcycle serviced and what items that need attention. It is recommended that you have your RGNT Motorcycle serviced every 12 months by a RGNT Dealer/Service Partner regardless of the distance ridden.

Maintenance schedule

#	Item	Activity	Maintenance intervals: Kilometers / Miles & time						
			Each use	1000/600	7000/4000	13000/ 8000	19000/12000	25000/16000	31000/20000
				1 month	6 months	12 months	18 months	24 months	30 months
1	Brake fluid	Check brake fluid, add if needed	x			x		x	
		Replace brake fluid every 12 months			x		x		
2	Front and rear brakes	Check function, replace brake pads if needed	x			x		x	

3	Wheels	Check condition and look for defects, replace if needed			x	x	x	x	x
4	Tires	Check air pressure and tread depth and look for defects, Correct / replace if needed	x			x		x	x
5	Wheel Bearings	Check function and look for defects, replace if needed				x	x	x	x
6	Hub motor	Check function and look for defects.				x		x	
7	Steering Bearings	Check for slack or loose fitting, replace if needed				x	x	x	x
8	Component fasteners	Check fasteners and fittings for loose fitting, tighten if needed. Done for all components. (See Torque table for items with torque requirements)			x	x	x	x	x
9	Front fork	Check function and oil leakage, service or replace if needed	x			x	x	x	x
10	Rear shock assembly	Check function and oil leakage, service or replace if needed	x			x	x	x	x
11	Throttle	Check function and free play, adjust or replace if needed	x					x	x
12	Kickstand	Check function, replace if necessary				x	x	x	x

Torque table

Item	Torque	Notes
Front axle		Use anti-seize lubricant
Handlebar clamp mount bolts		
Main pivot bolt/nut (swingarm)		Use threadlock lubricant
Shock mount bolts (upper/lower)		
Triple tree pinch bolts		
Front axle pinch bolts		Use anti-seize lubricant
Rear axle slider retaining bolts		
Rear axle end bolt		Use threadlock lubricant
Front caliper mount bolts		Use threadlock lubricant

19. WARRANTY

RGNT Electric AB (“RGNT”) warrants that, dependent on the exclusions and limitations set out beneath, the RGNT No1 vehicle purchased by you will be without defects in materials and workmanship, when used ordinarily in accordance with our published guidelines. The warranty period is during the time period of two (2) years or 30.000 km (whichever comes first) from the date of delivery.

19.1. Warranty Guidelines

Our published guidelines include but are not restricted to information included on our website, www.rgnt-motorcycles.com and in the supplied user manuals. In the event that the Product does not meet the warranty standard to our reasonable satisfaction, we will within a commercially reasonable time, free of charge, either repair or replace the Product as described beneath.

19.2. Warranty Location

The Warranty is only valid and enforceable to vehicles sold and located within;

- EU
- Norway, Switzerland & UK

19.3. Warranty Claim

If you wish to make a warranty claim, please contact us at warranty@rgnt-motorcycles.com. Please include the VIN-number of your vehicle. Our company will look after you through the process involved in a claim.

Any Warranty claim is subject to you alerting us of the alleged defect within a reasonable time of it coming to your notice and, in any case, by no later than the expiration of the Warranty Period.

19.4. Notification

To obtain warranty service, you must notify us within the applicable Warranty Period. The location of the nearest RGNT Authorised Service Partner may be obtained by emailing warranty@rgnt-motorcycles.com. The location is subject to change at any time and without prior notice.

19.5. Local Taxes & Tolls

Local taxes and tolls are not covered.

19.6. What is excluded?

- 19.6.1. Unless agreed in writing, the Warranty will not apply if the defect(s) relate to: (i) normal wear and tear (including, without restriction, wear and tear of batteries), (ii)

defects caused by rough or inappropriate handling or use or harm caused by accident, misuse, mistreatment, fire, water, lightning or other acts of nature, including submission in water (iii) the reality that the battery has been short-circuited, if the seals of the battery envelopment or the cells are broken or show evidence of change of state or if the battery has been used in equipment other than the Product, (iv) non-compliance with the Product instructions, (v) intentional or deliberate damage, neglect or negligence; (vi) use of spare parts or other substitution items (including consumables) which are not supplied or recommended by us; (vii) any change or modification to the Product which has been carried out by you or a third party not approved by us, (viii) any failure to adequately parcel the Product for transportation, (ix) theft, vandalism, act of God, overloading, towing, and (x) other causes beyond our reasonable control. In addition, this warranty does not cover any corrosion or paint defects, tyres, brakes, connectors. windshield cracks and maintenance services.

- 19.6.2. This Warranty will be nullified if (i) the Product's serial number has been removed or is illegible in any way (as determined by our sole judgment), or (ii) the VIN defaced or altered or the odometer or other related system disconnected, altered or rendered inoperative so that it is difficult to determine the VIN number or actual distance travelled, or (iii) that have been determined to be a total loss by an insurance company, or (iv) you are in breach of the terms of this Warranty or your written agreement with us.
- 19.6.3. We hereby disclaim any and all indirect, incidental, special and consequential damages arising out of or relating to your RGNT No1, including, but not limited to, transportation, loss of RGNT No1 value, loss of time, loss of income, loss of use, loss of personal or commercial property, inconvenience or aggravation, emotional distress or harm, commercial loss (including but not limited to lost profits or earnings), towing charges, bus fares, service call charges, gasoline expenses, lodging expenses, damage to tow RGNT No1, and incidental charges such as telephone calls, facsimile transmissions, and mailing expenses. We shall not be liable for any direct damages in an amount that exceeds the fair market value of the RGNT No.1 at the time of the claim. Lone remedy and dispute resolution
- 19.6.4. This Warranty is your sole and exclusive remedy against RGNT Electric AB. and RGNT Electric AB's sole and exclusive obligation in respect of defects in the Product. Implied and express warranties and conditions arising under applicable laws or in equity, if any, including, but not limited to, implied warranties and conditions of merchantability, fitness for a particular purpose or durability are disclaimed to the fullest extent allowable by law.
- 19.6.5. This Warranty supersedes all other RGNT Electric AB's warranties and liabilities, whether oral, written, (non-mandatory) statutory, contractual, in tort or other, including, without restriction, and where allowed by applicable law, any implied conditions, warranties or other terms as to adequate quality or fitness for purpose.

19.6.6. The performance of the necessary repairs and parts replacement by us is the exclusive remedy under this Warranty or any implied warranties.

19.6.7. This Warranty is governed by the laws in Sweden.

19.6.8. In the event any disputes, differences or controversies arise between you and RGNT Electric AB. related to this Warranty, we will explore all possibilities for an amicable settlement. In case an amicable settlement is not reached, We offer a dispute settlement program through the Swedish Court. We require that you submit your dispute to us and wait for a decision to be issued prior to pursuing any other remedy.

19.6.9. Signed on behalf of RGNT Electric AB

Jonathan Åström
CEO
RGNT Electric AB

Contact Us

Please contact us for any and all questions you may have with regards to the vehicle, pre-orders or about RGNT Electric AB.

Call us at +46 (0) 702 161 810 or drop us a line at hello@rgnt-motorcycles.com

HQ - RGNT Electric AB

Tryckarevägen 8
434 37 Kungbacka
Sweden